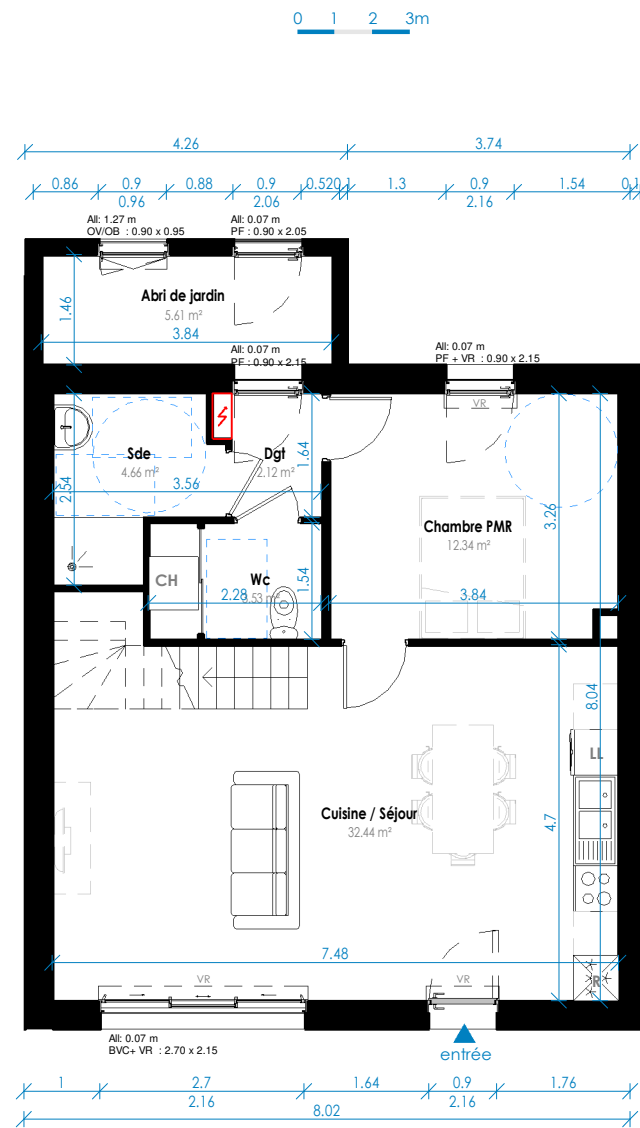
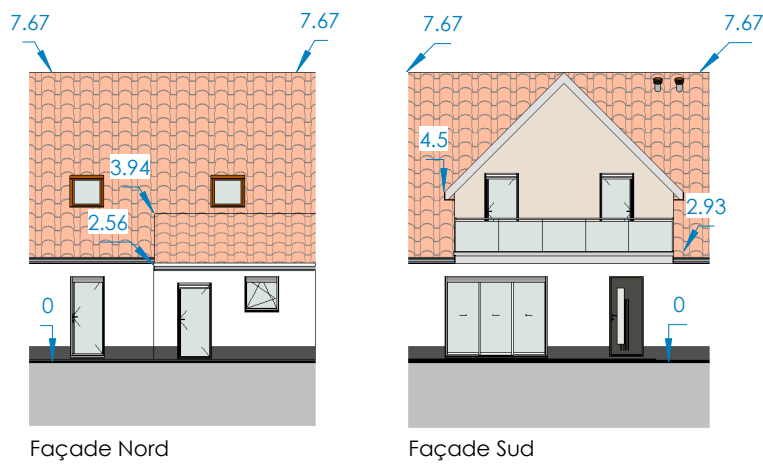
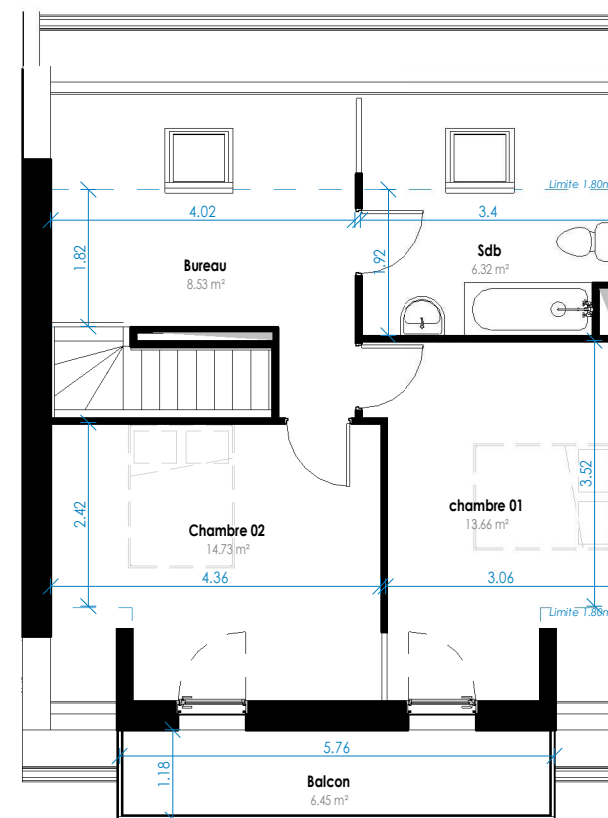


LOGEMENT : 09

Pièces	Surface
Wc	3.53 m ²
Sde	4.66 m ²
Dgt	2.12 m ²
Chambre PMR	12.34 m ²
Cuisine / Séjour	32.44 m ²
chambre 01	13.66 m ²
Chambre 02	14.73 m ²
Bureau	8.53 m ²
Sdb	6.32 m ²
Surface Total habitable	98.31 m²
Abri de jardin	5.61 m ²
Balcon	6.45 m ²
	12.06 m²
Surface Total Logement	110.37 m²

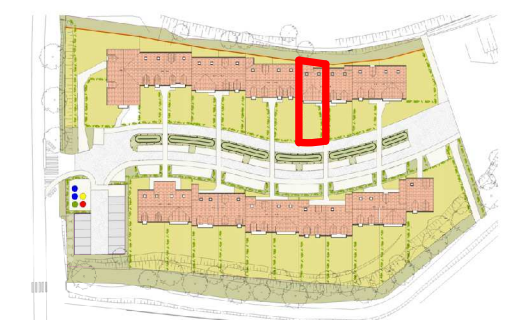


Plan RDC



Plan R+1

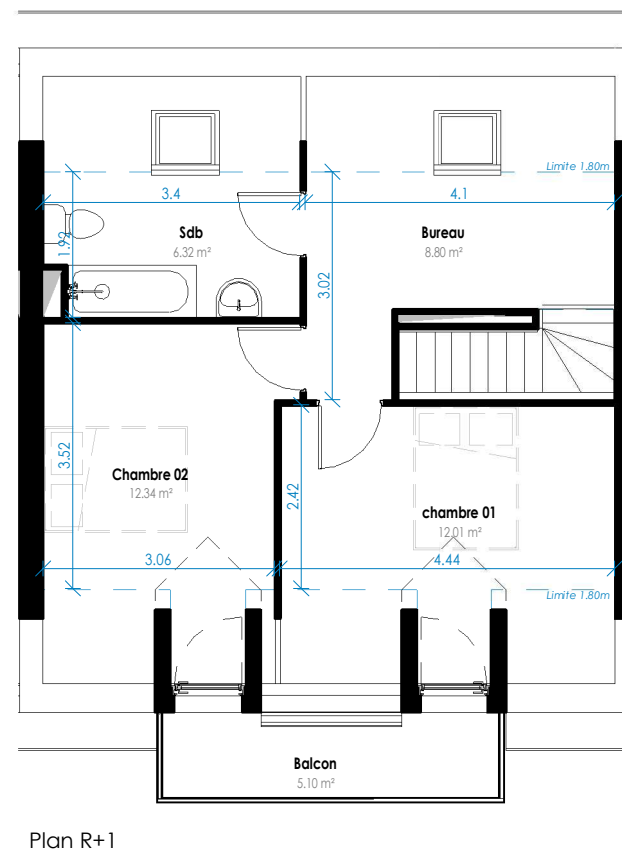
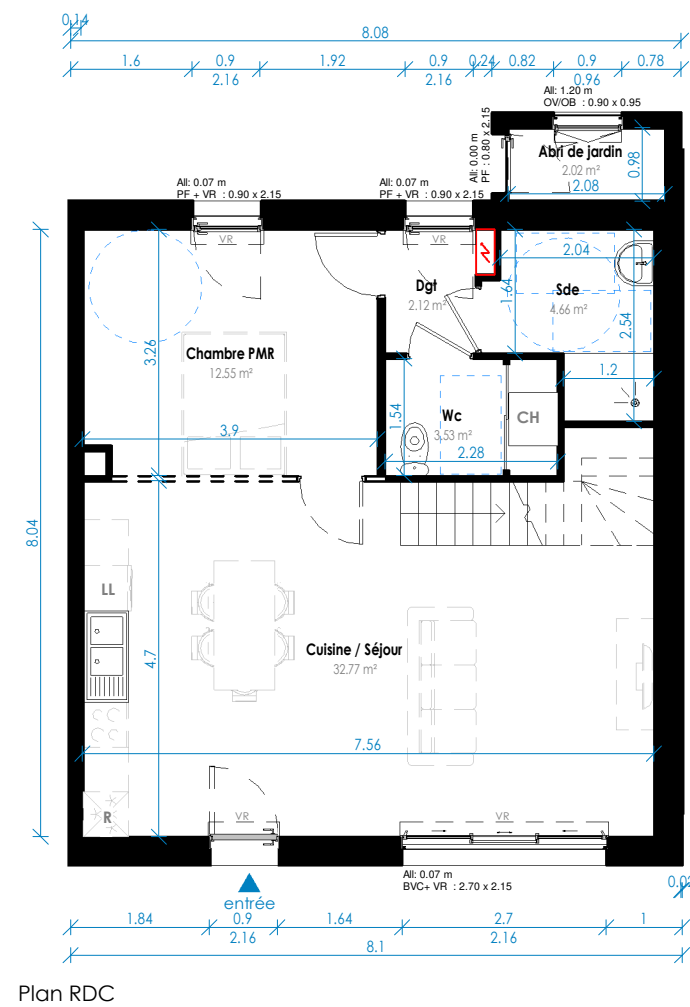
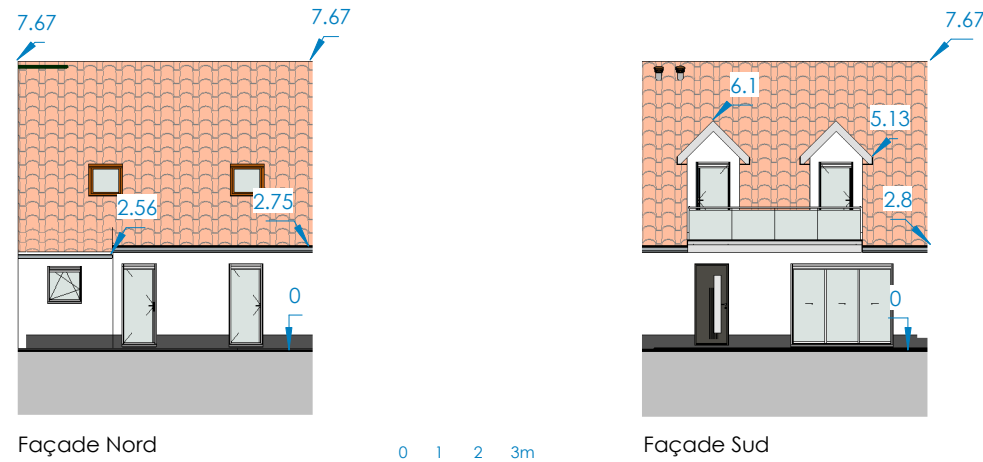
LOCALISATION



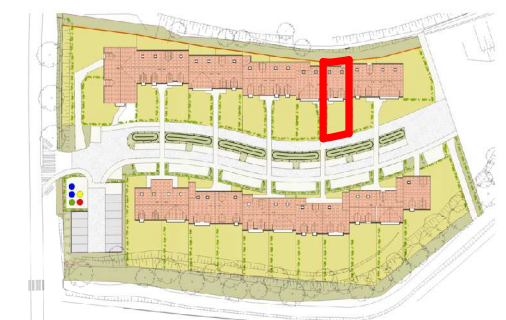
Date		
Signataire	Acquéreur	Vendeur
Visa		

LOGEMENT : 10

Pièces	Surface
Sde	4.66 m ²
Wc	3.53 m ²
Dgt	2.12 m ²
Chambre PMR	12.55 m ²
Cuisine / Séjour	32.77 m ²
chambre 01	12.01 m ²
Chambre 02	12.34 m ²
Sdb	6.32 m ²
Bureau	8.80 m ²
Surface Total habitable	95.08 m²
Abri de jardin	2.02 m ²
Balcon	5.10 m ²
	7.11 m²
Surface Total Logement	102.19 m²



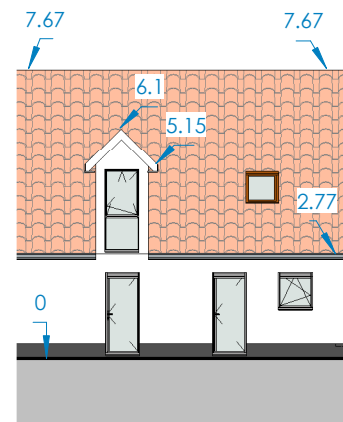
LOCALISATION



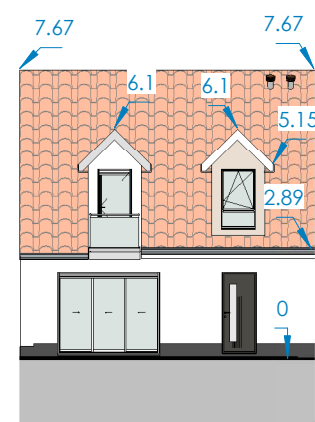
Date		
Signataire	Acquéreur	Vendeur
Visa		

LOGEMENT : 11

Pièces	Surface
Cuisine / Séjour	32.44 m ²
Wc	3.53 m ²
Chambre PMR	12.34 m ²
Sde	4.66 m ²
Dgt	2.12 m ²
Chambre 02	12.16 m ²
chambre 01	12.08 m ²
Sdb	7.54 m ²
Bureau	8.50 m ²
Surface Total habitable	95.37 m²
Balcon	1.50 m ²
Surface Total Logement	96.87 m²

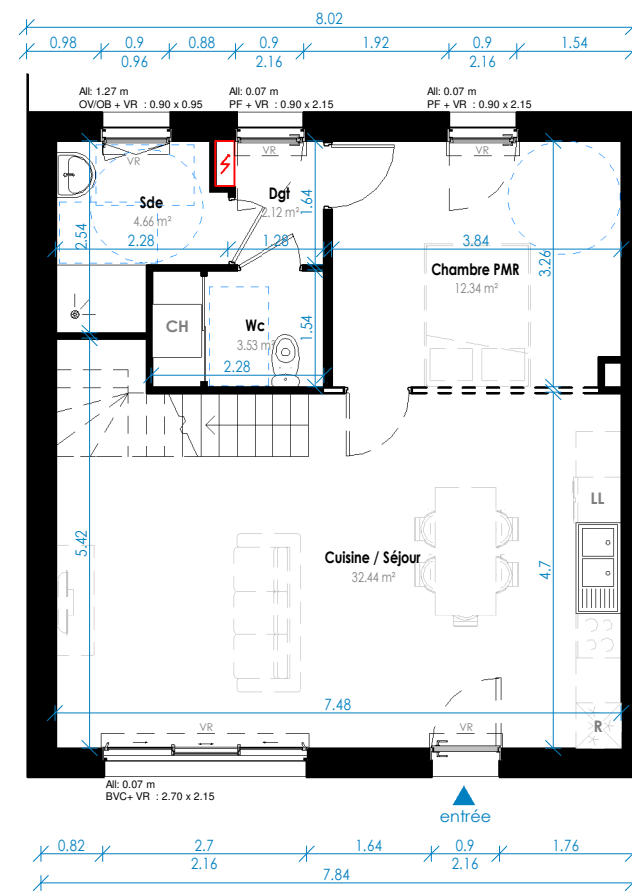


Façade Nord

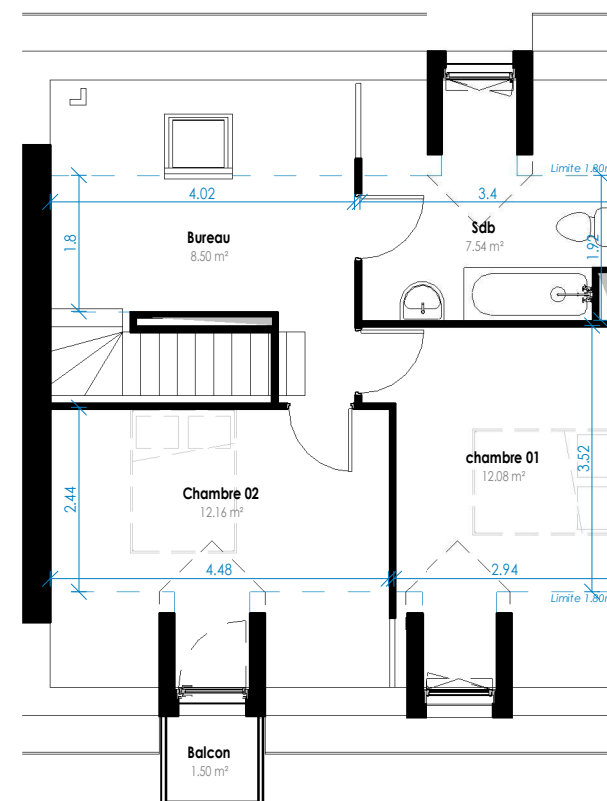


Façade Sud

0 1 2 3m



0 1 2 3m



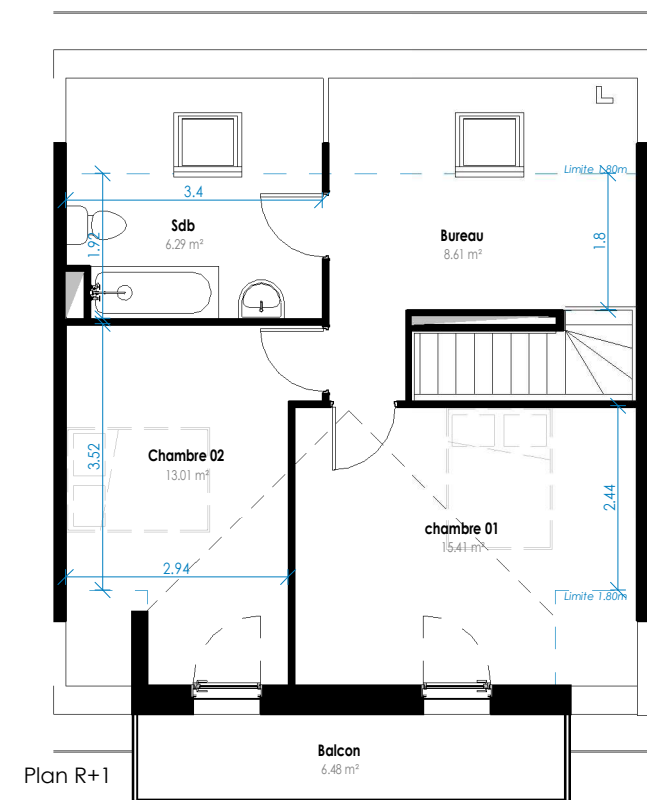
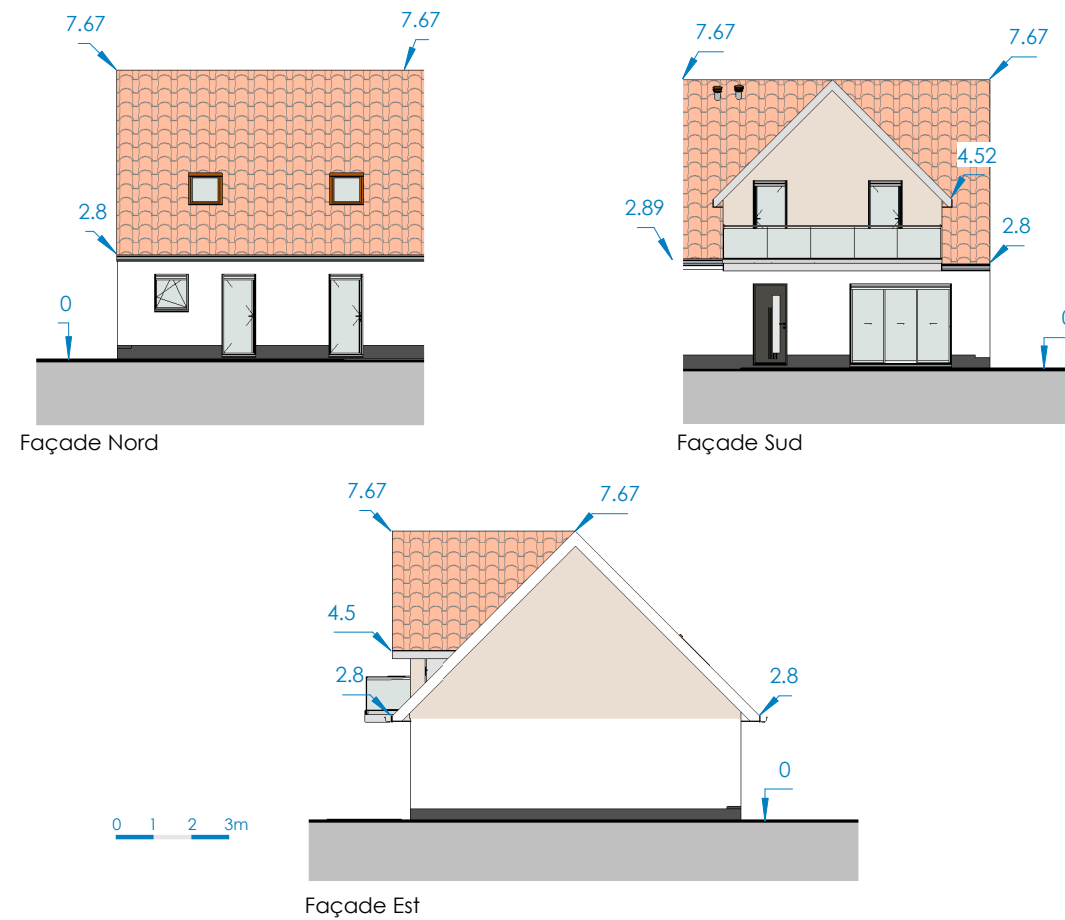
LOCALISATION



Date	Acquéreur	Vendeur

LOGEMENT : 12

Pièces	Surface
Cuisine / Séjour	32.77 m ²
Chambre PMR	12.61 m ²
Wc	3.53 m ²
Dgt	2.12 m ²
Sde	4.61 m ²
Chambre 02	13.01 m ²
Sdb	6.29 m ²
Bureau	8.61 m ²
chambre 01	15.41 m ²
Surface Total habitable	98.94 m²
Balcon	6.48 m ²
	6.48 m²
Surface Total Logement	105.42 m²



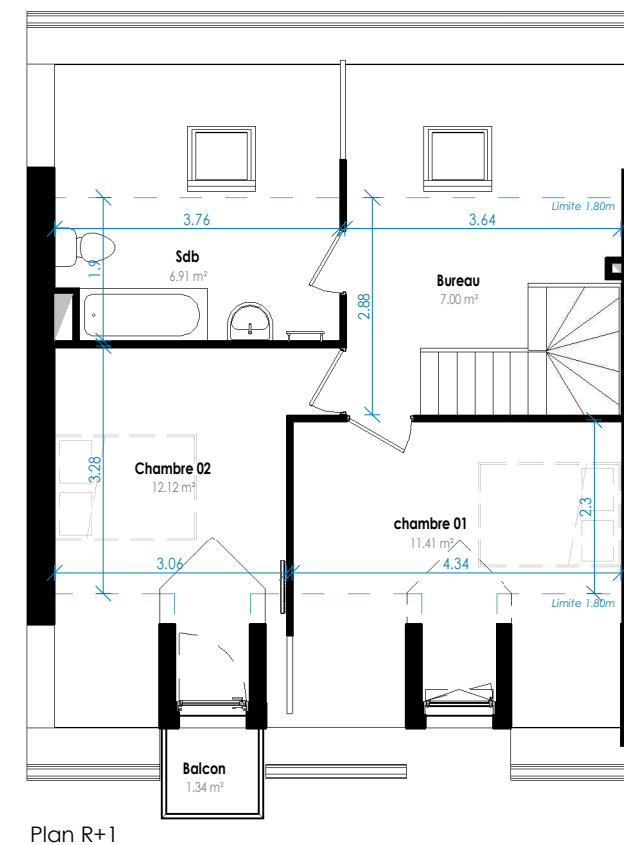
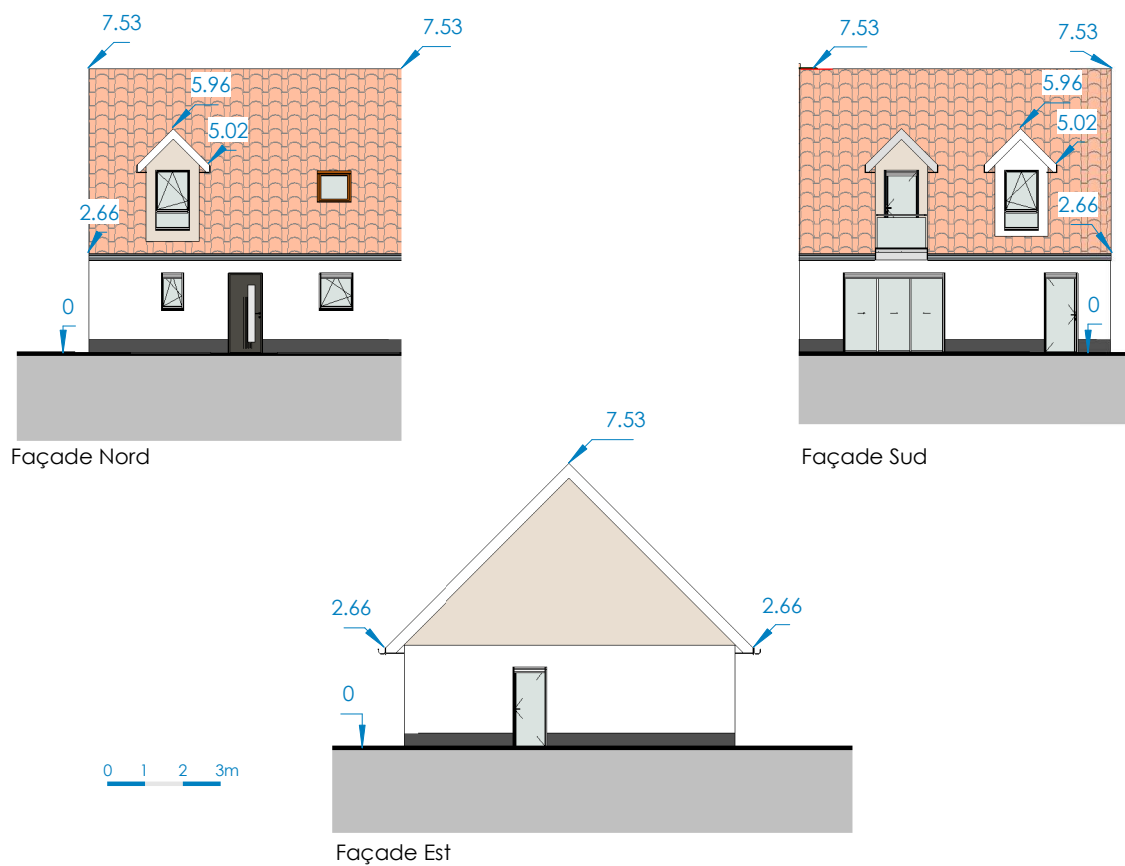
LOCALISATION



Date		
Signataire	Acquéreur	Vendeur
Visa		

LOGEMENT : 13

Pièces	Surface
Cuisine / Séjour	30.52 m ²
Chambre PMR	12.20 m ²
Sde	6.11 m ²
Dgt	3.44 m ²
Wc	2.77 m ²
Bureau	7.00 m ²
Sdb	6.91 m ²
chambre 01	11.41 m ²
Chambre 02	12.12 m ²
Surface Total habitable	92.46 m²
Balcon	1.34 m ²
Surface Total Logement	93.81 m²



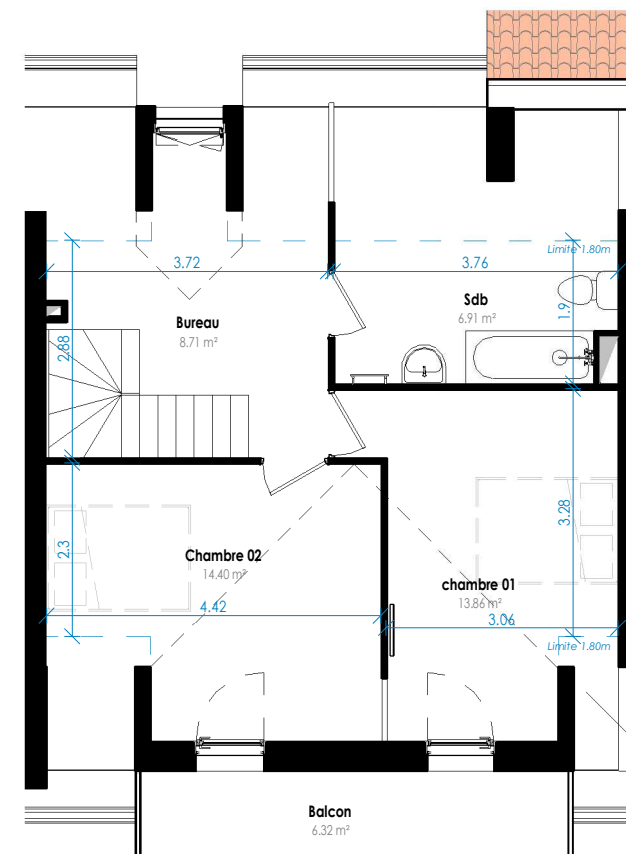
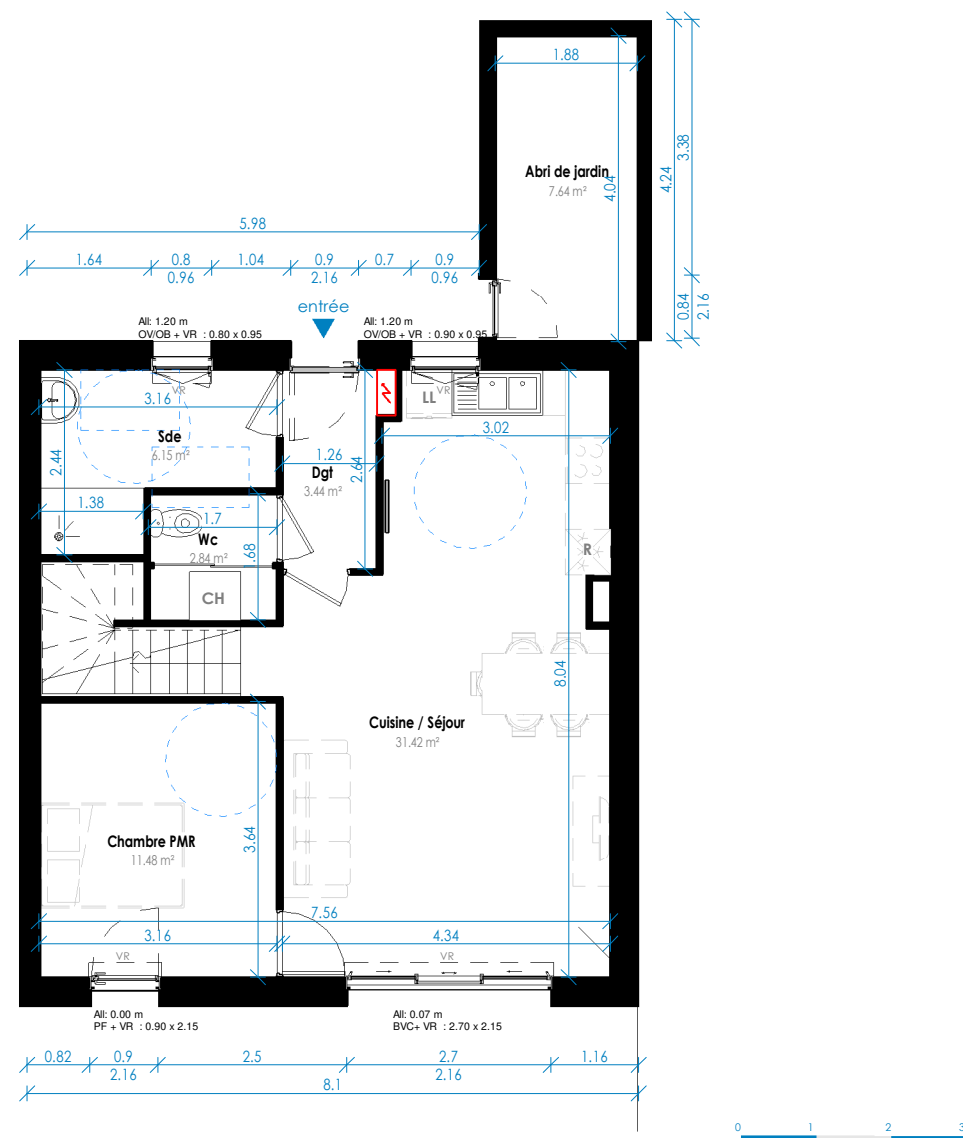
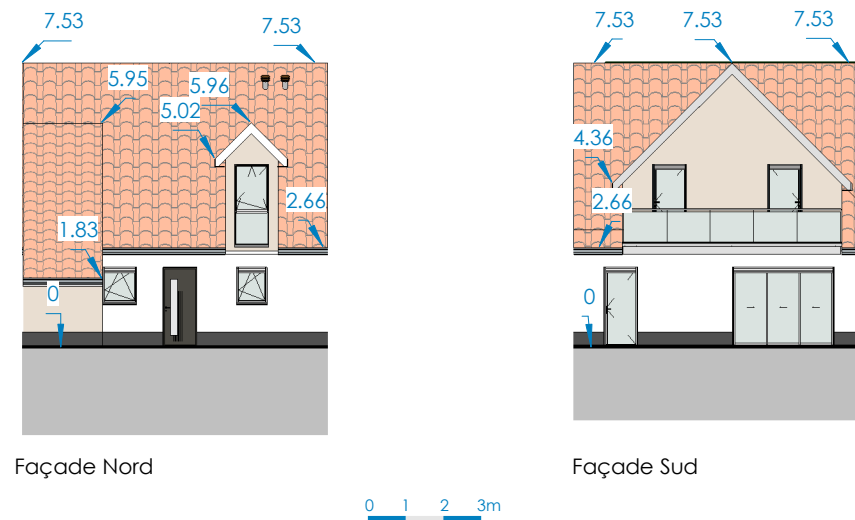
LOCALISATION



Date		
Signataire	Acquéreur	Vendeur
Visa		

LOGEMENT : 14

Pièces	Surface
Cuisine / Séjour	31.42 m ²
Dgt	3.44 m ²
Sde	6.15 m ²
Wc	2.84 m ²
Chambre PMR	11.48 m ²
Bureau	8.71 m ²
Sdb	6.91 m ²
chambre 01	13.86 m ²
Chambre 02	14.40 m ²
Surface Total habitable	99.21 m²
Abri de jardin	7.64 m ²
Balcon	6.32 m ²
	13.95 m²
Surface Total Logement	113.16 m²



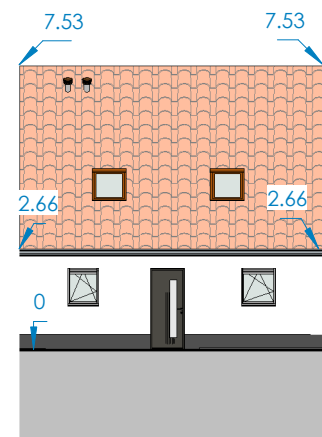
LOCALISATION



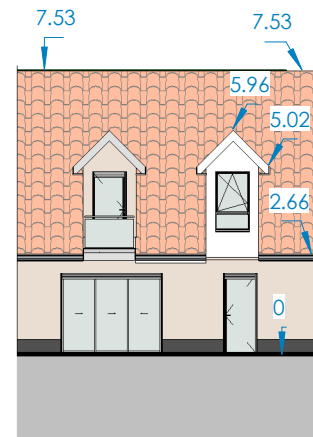
Date		
Signataire	Acquéreur	Vendeur
Visa		

LOGEMENT : 15

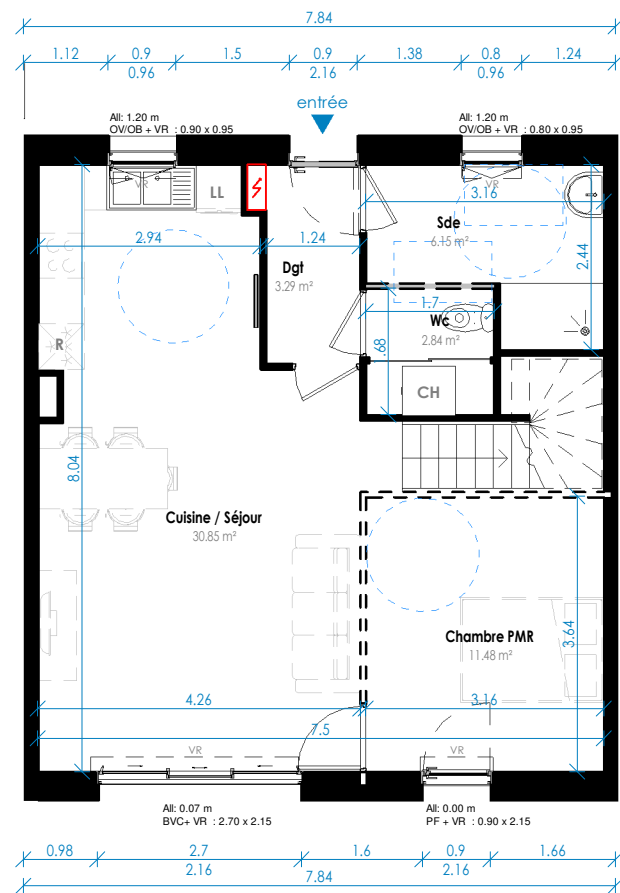
Pièces	Surface
Chambre PMR	11.48 m ²
Wc	2.84 m ²
Sde	6.15 m ²
Dgt	3.29 m ²
Cuisine / Séjour	30.85 m ²
Sdb	7.10 m ²
Bureau	8.80 m ²
chambre 01	11.28 m ²
Chambre 02	11.87 m ²
Surface Total habitable	93.67 m²
Balcon	1.38 m ²
Surface Total Logement	95.05 m²



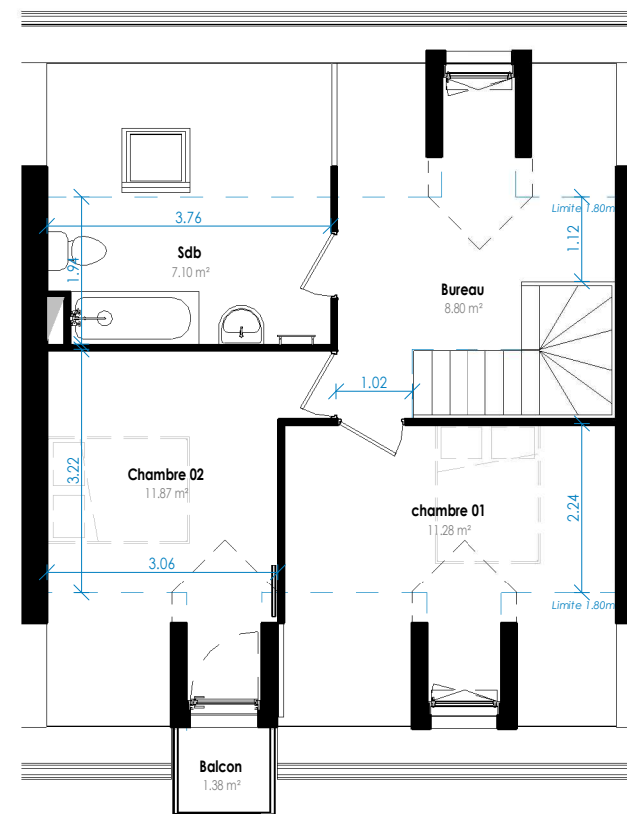
Façade Nord



Façade Sud



Plan RDC



Plan R+1



LOCALISATION



Date		
Signataire	Acquéreur	Vendeur
Visa		